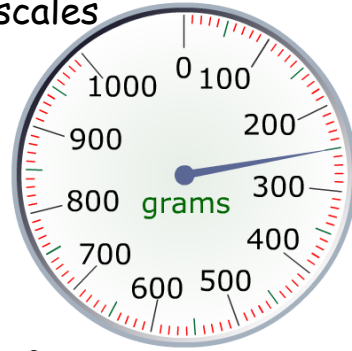


# Reading Scales and Converting Units

1. a) Read the weight from the following scales

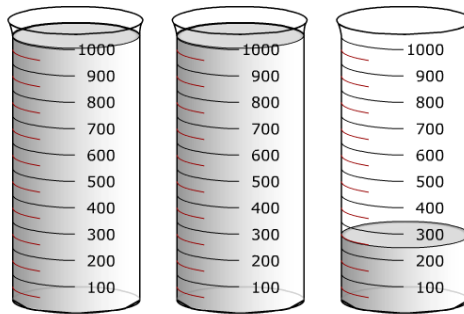


.....g

b) What is this weight in kilograms?

.....kg

2. a) How much liquid is there in these containers?

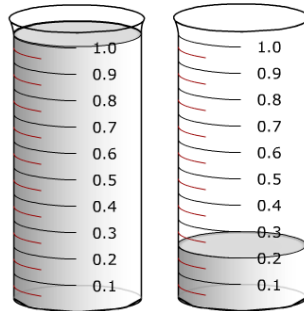


.....ml

b) What is this in litres?

.....l

3. a) How much liquid is there in these containers?



.....l

b) What is this in millilitres?

.....ml

4. Fill in the following tables.

Length	
1km	.....m
1m	.....cm
1cm	.....mm

Capacity	
1l	.....ml
Mass	
1kg	.....g

# Converting Units of Measurement

## 1. Copy and complete the following conversions

For these questions you will need to convert these larger units of measure into smaller ones by multiplying by 10, 100 or 1000.

$3\text{cm} = \underline{\hspace{2cm}} \text{mm}$

$5\text{m} = \underline{\hspace{2cm}} \text{cm}$

$6\text{km} = \underline{\hspace{2cm}} \text{m}$

$54\text{l} = \underline{\hspace{2cm}} \text{ml}$

$5.8\text{km} = \underline{\hspace{2cm}} \text{m}$

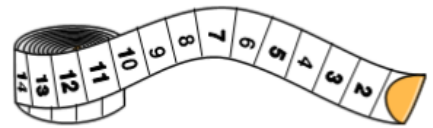
$13.6\text{cm} = \underline{\hspace{2cm}} \text{mm}$

$6.193\text{km} = \underline{\hspace{2cm}} \text{m}$

$3.4\text{kg} = \underline{\hspace{2cm}} \text{g}$

$4.56\text{l} = \underline{\hspace{2cm}} \text{ml}$

$150.953\text{km} = \underline{\hspace{2cm}} \text{m}$



## 2. Copy and complete the following conversions

For these questions you will need to convert these smaller units of measure into larger ones by dividing by 10, 100 or 1000.

$30\text{mm} = \underline{\hspace{2cm}} \text{cm}$

$400\text{cm} = \underline{\hspace{2cm}} \text{m}$

$9000\text{m} = \underline{\hspace{2cm}} \text{km}$

$540\text{mm} = \underline{\hspace{2cm}} \text{cm}$

$5500\text{g} = \underline{\hspace{2cm}} \text{kg}$

$4650\text{m} = \underline{\hspace{2cm}} \text{km}$

$656\text{cm} = \underline{\hspace{2cm}} \text{m}$

$75\text{mm} = \underline{\hspace{2cm}} \text{cm}$

$1122\text{ml} = \underline{\hspace{2cm}} \text{l}$

$356\text{mm} = \underline{\hspace{2cm}} \text{cm}$



## Extension Questions:

3. I live 750m from school. How far do I walk to and from school per day in km?

4. I walk 200m each day. How many days do I need to walk until I have walked 1km?

5. What is 1km in cm?

6. How many cm are there in 2km?

