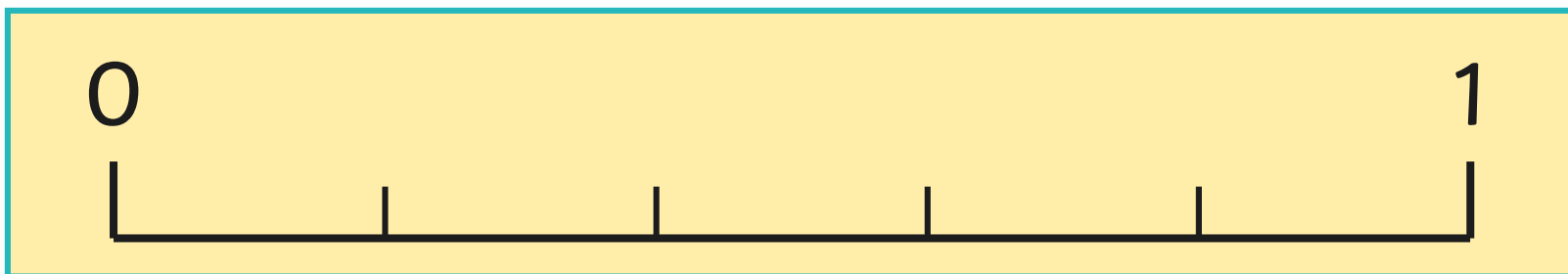
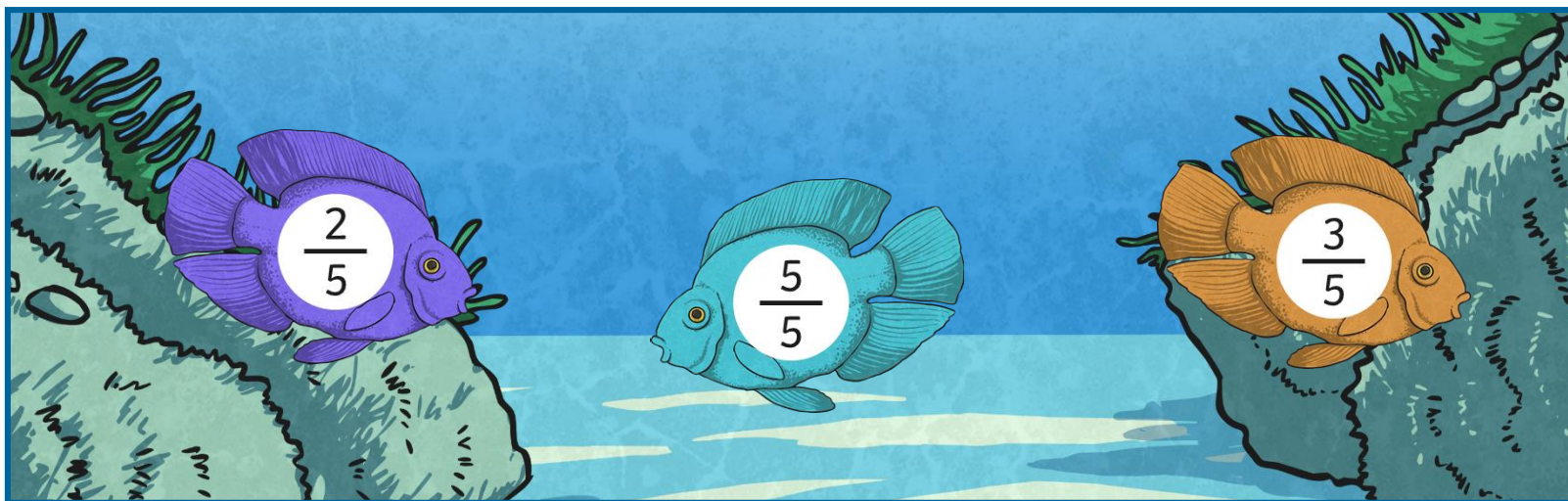


Fractions on a number line

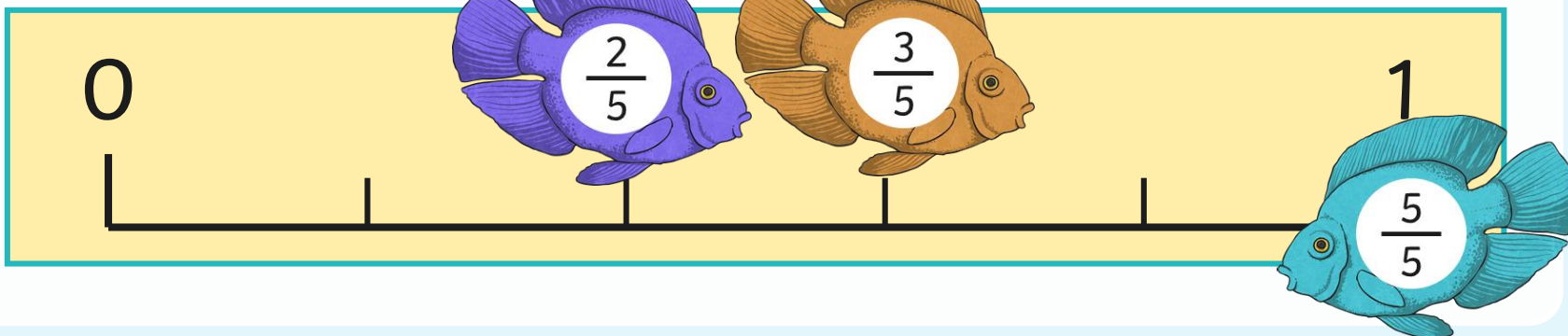


Sophie loves fishing. When she catches fish of the same family, she sorts them into size order. Which of the fraction fish should Sophie try to catch if she wants to sort them on a number line into size order?





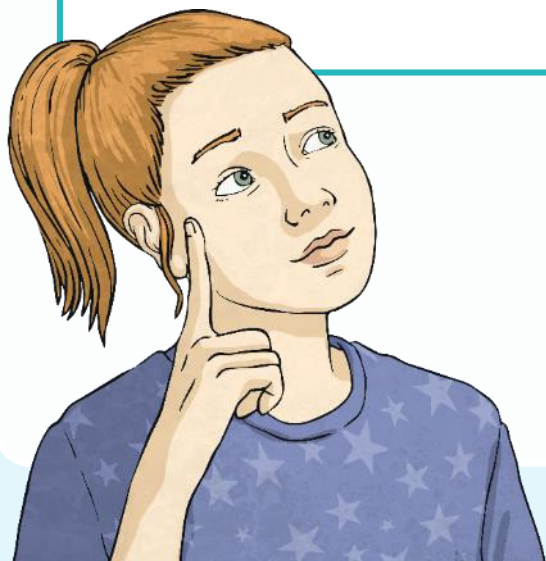
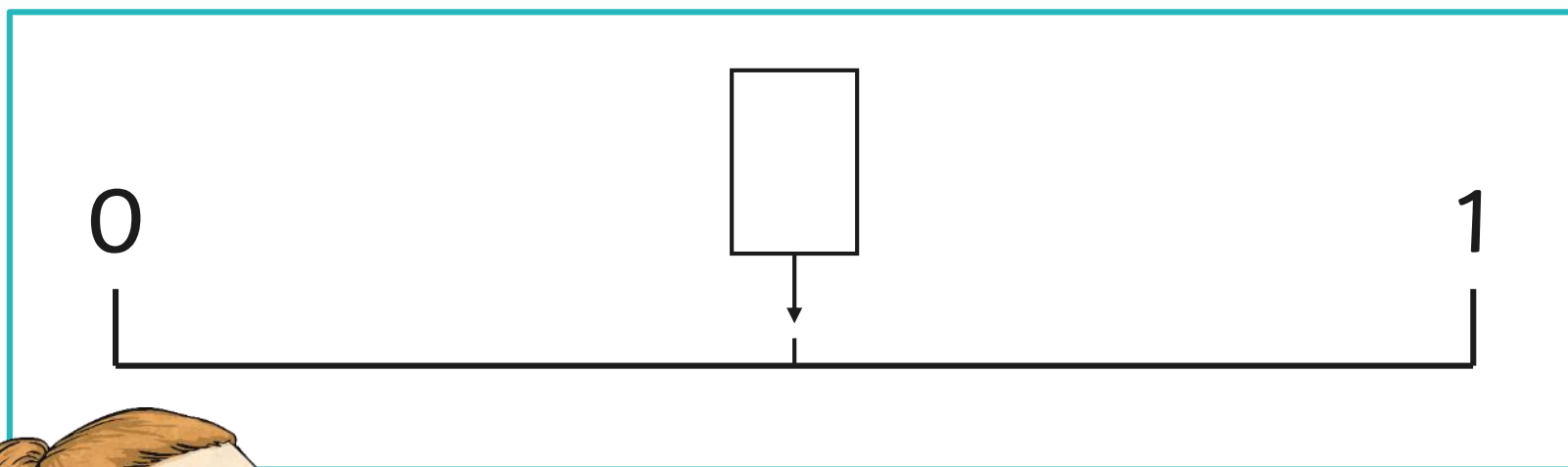
Sophie loves fishing. When she catches fish of the same family, she sorts them into size order. Which of the fraction fish should Sophie try to catch if she wants to sort them on a number line into size order?





The number line is divided into equal parts.

What fraction belongs in the middle of the number line?



$$\frac{1}{4}$$

$$\frac{1}{5}$$

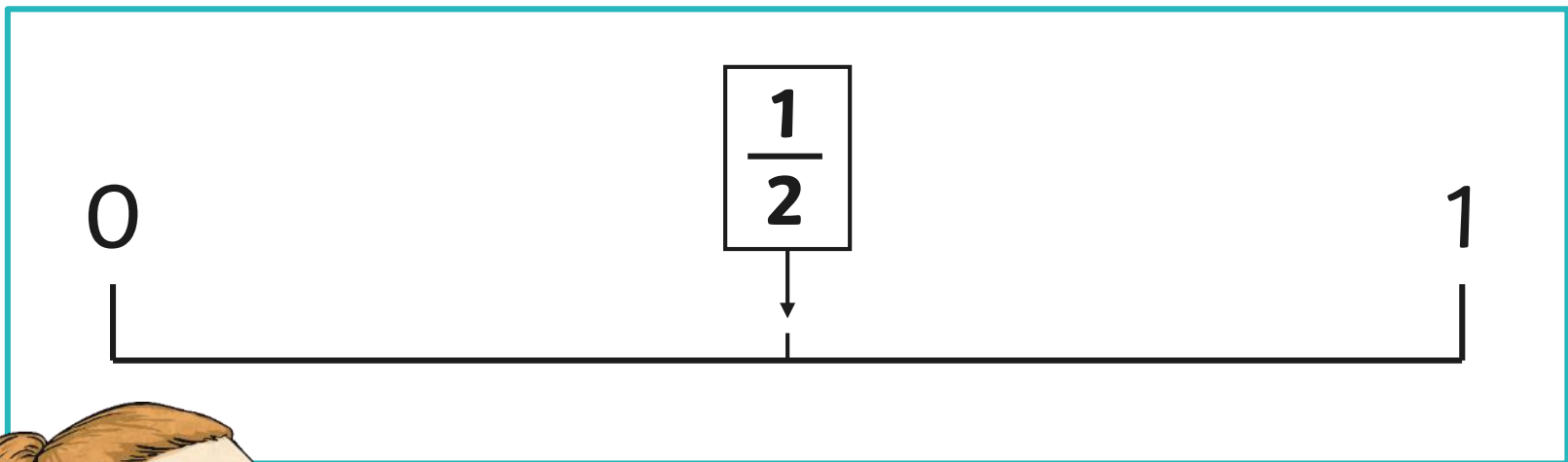
$$\frac{1}{2}$$

$$\frac{1}{1}$$



The number line is divided into equal parts.

What fraction belongs in the middle of the number line?



$$\frac{1}{4}$$

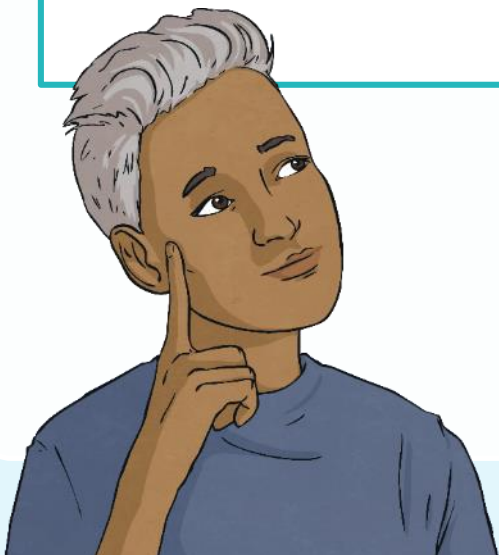
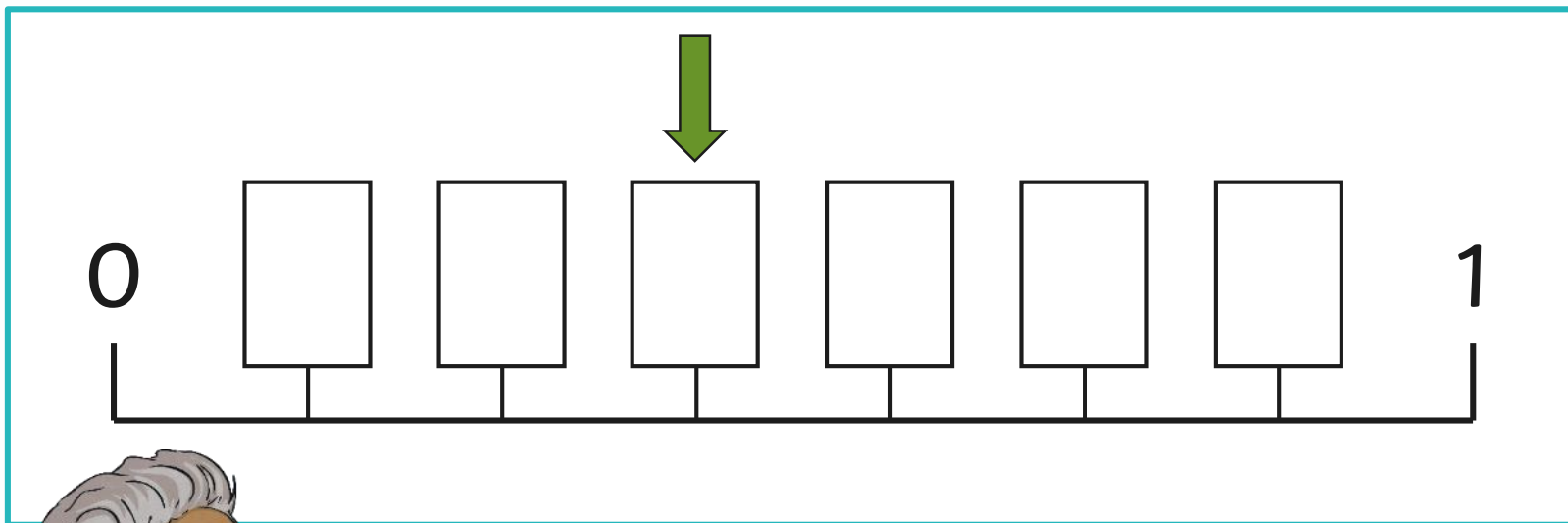
$$\frac{1}{5}$$

$$\frac{1}{1}$$



The number line is divided into equal parts.

What fraction belongs here?



$$\frac{3}{7}$$

$$\frac{2}{7}$$

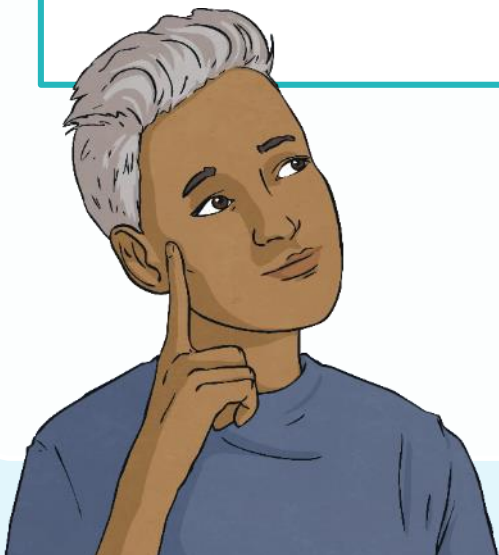
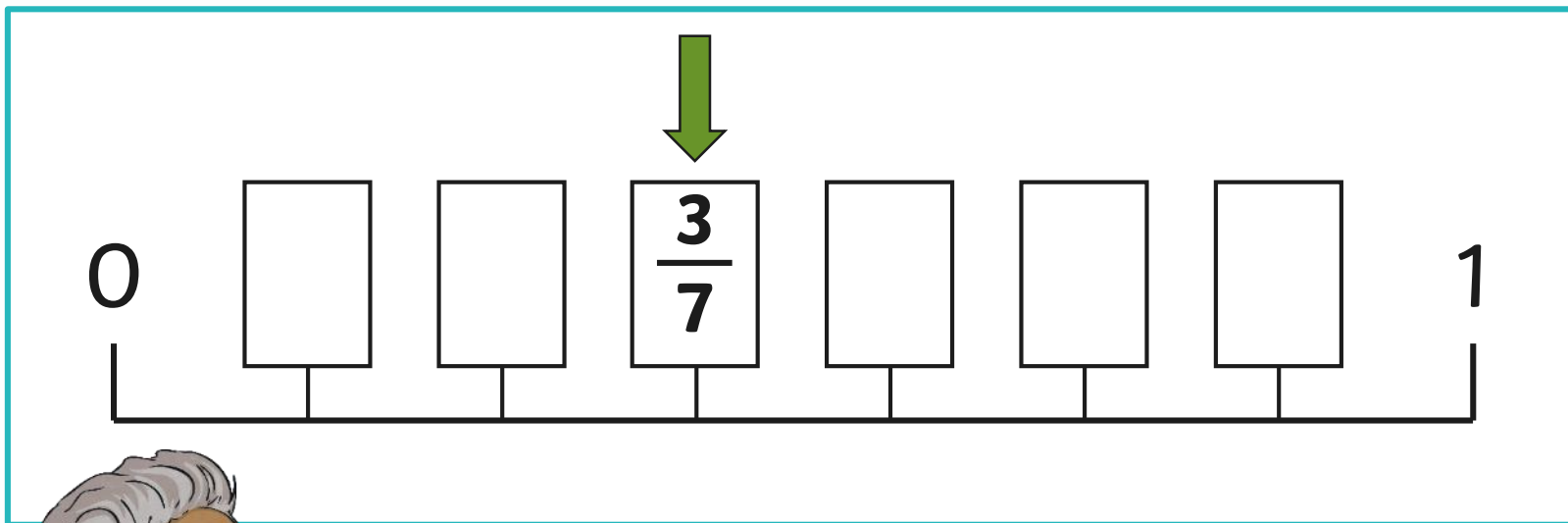
$$\frac{3}{6}$$

$$\frac{2}{6}$$



The number line is divided into equal parts.

What fraction belongs here?



$$\frac{2}{7}$$

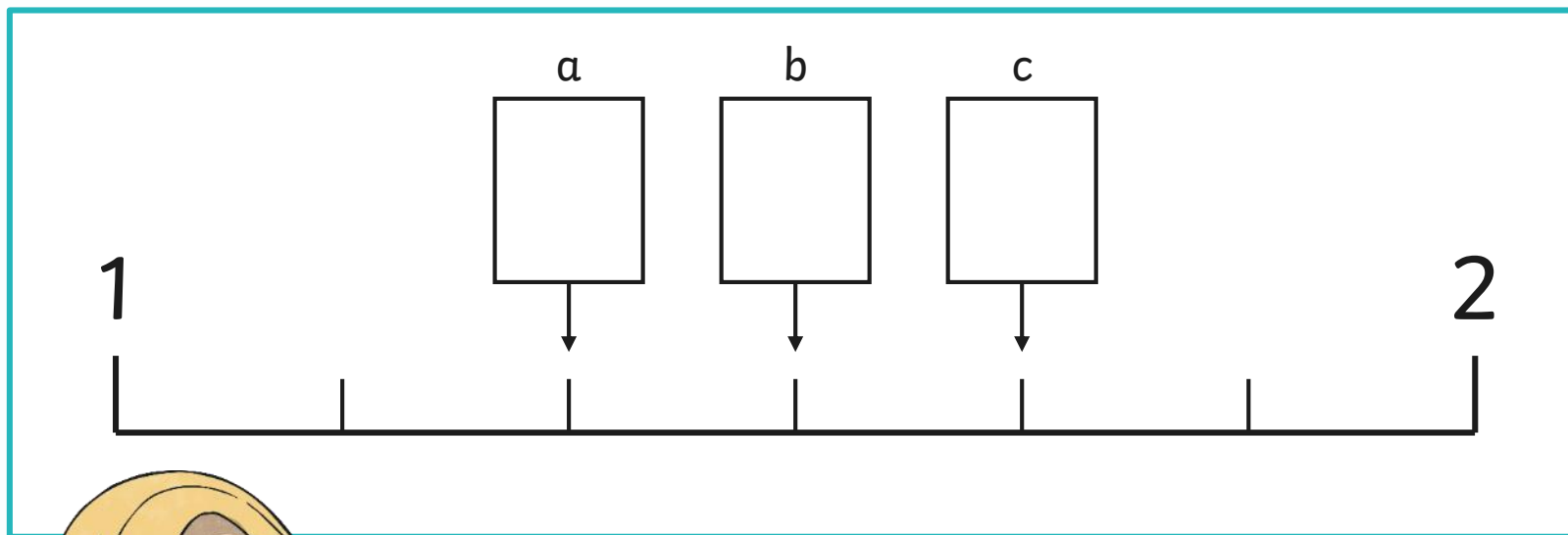
$$\frac{3}{6}$$

$$\frac{2}{6}$$

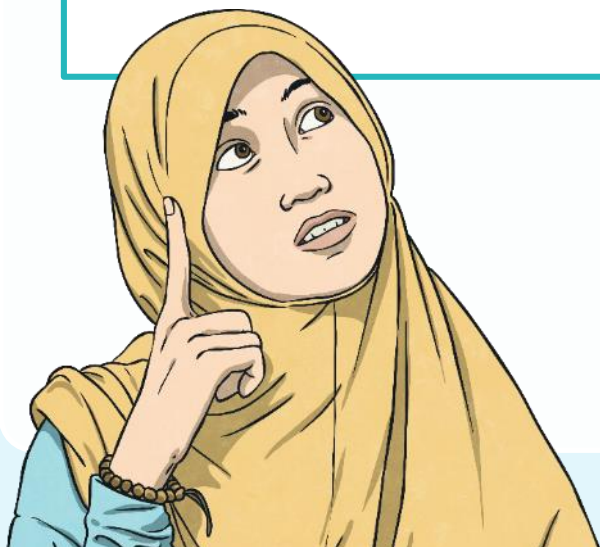


The number line is divided into equal parts.

Where should $1\frac{4}{6}$ be placed?



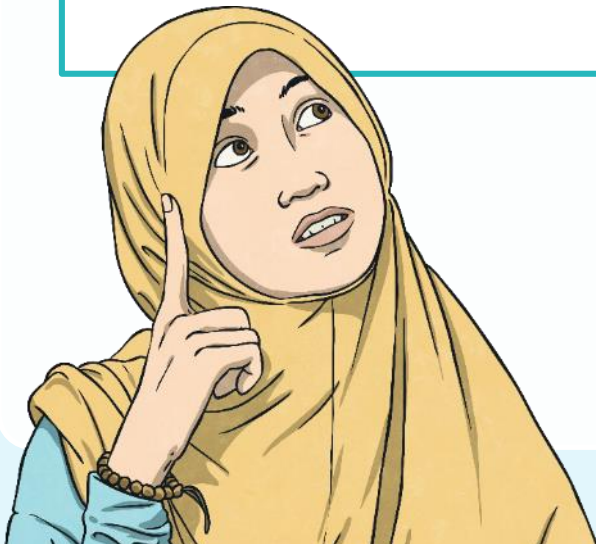
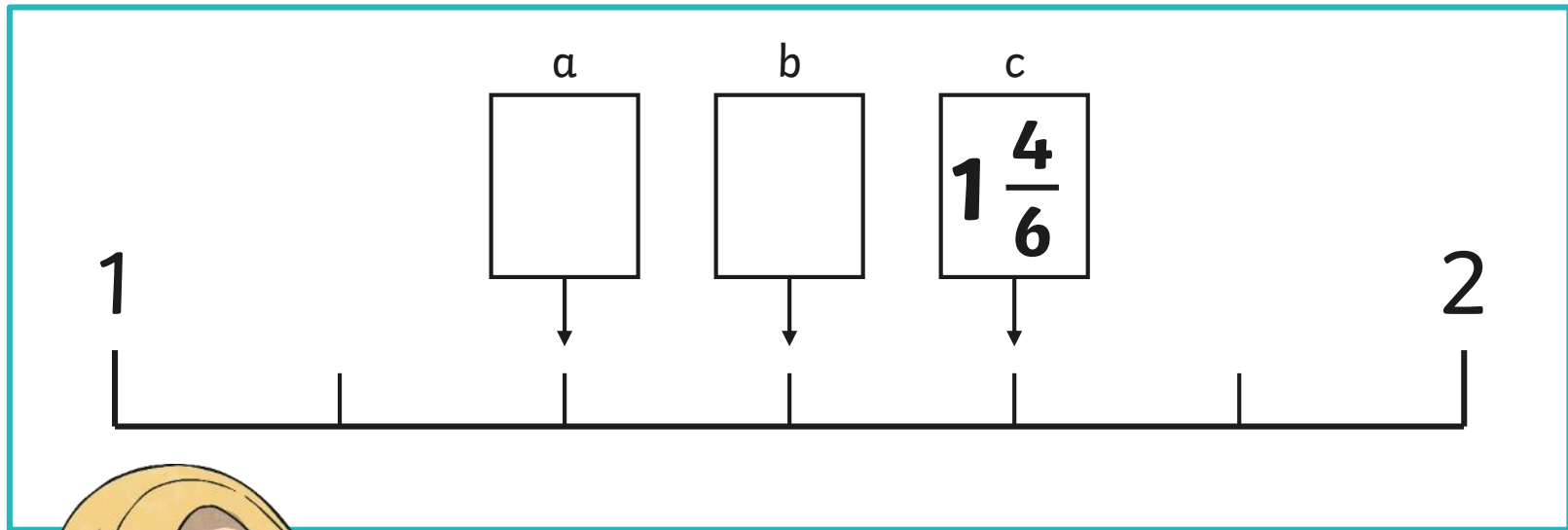
$$1\frac{4}{6}$$





The number line is divided into equal parts.

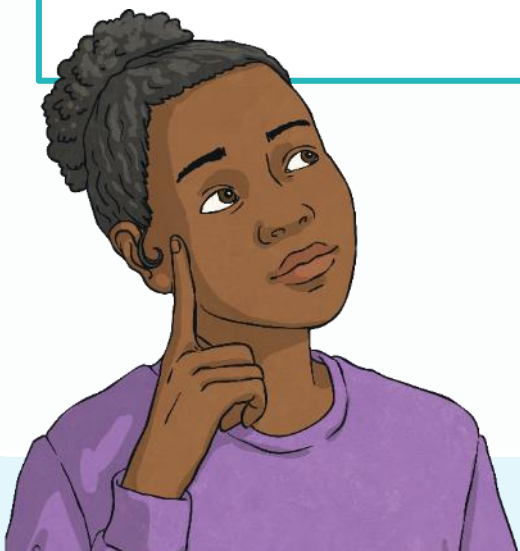
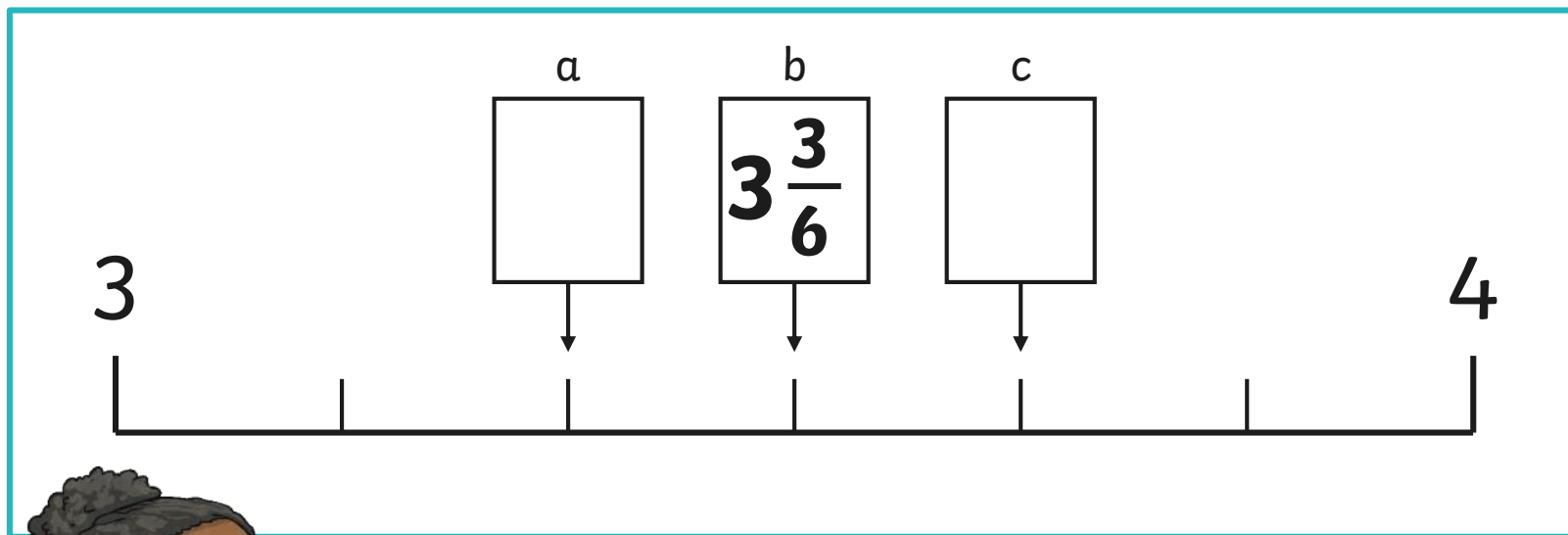
Where should $1\frac{4}{6}$ be placed?





The number line is divided into equal parts.

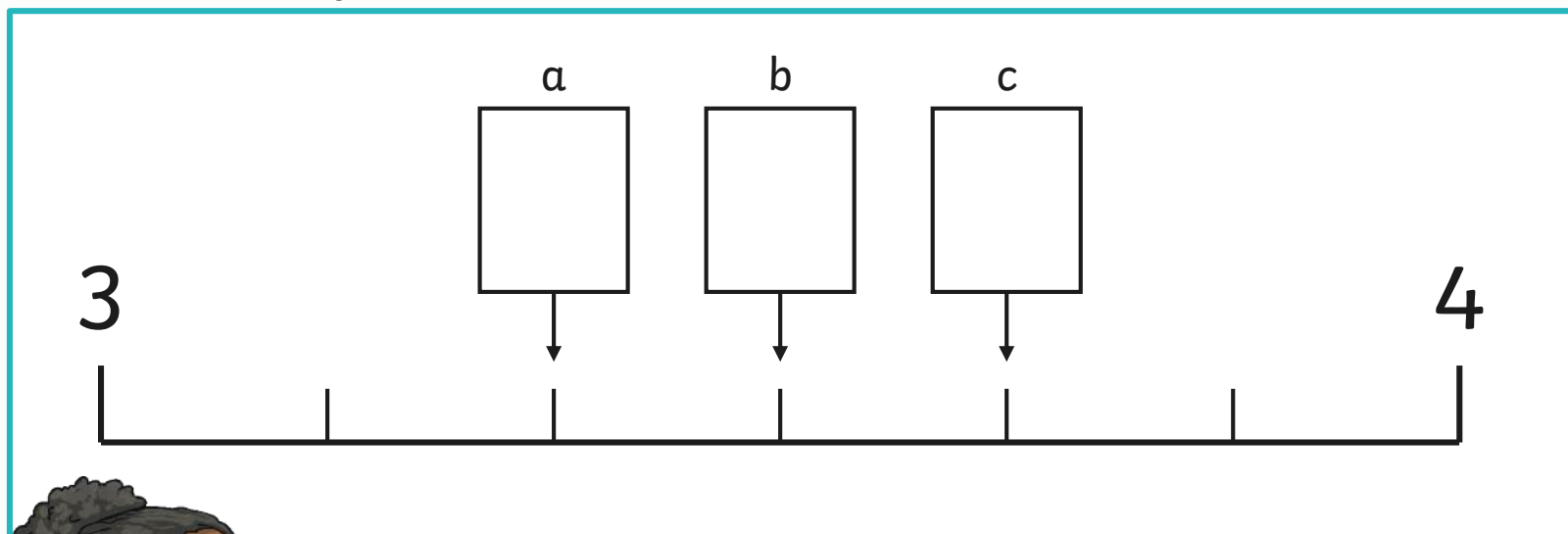
Where should $3\frac{3}{6}$ be placed?





The number line is divided into equal parts.

Where should $3\frac{3}{6}$ be placed?

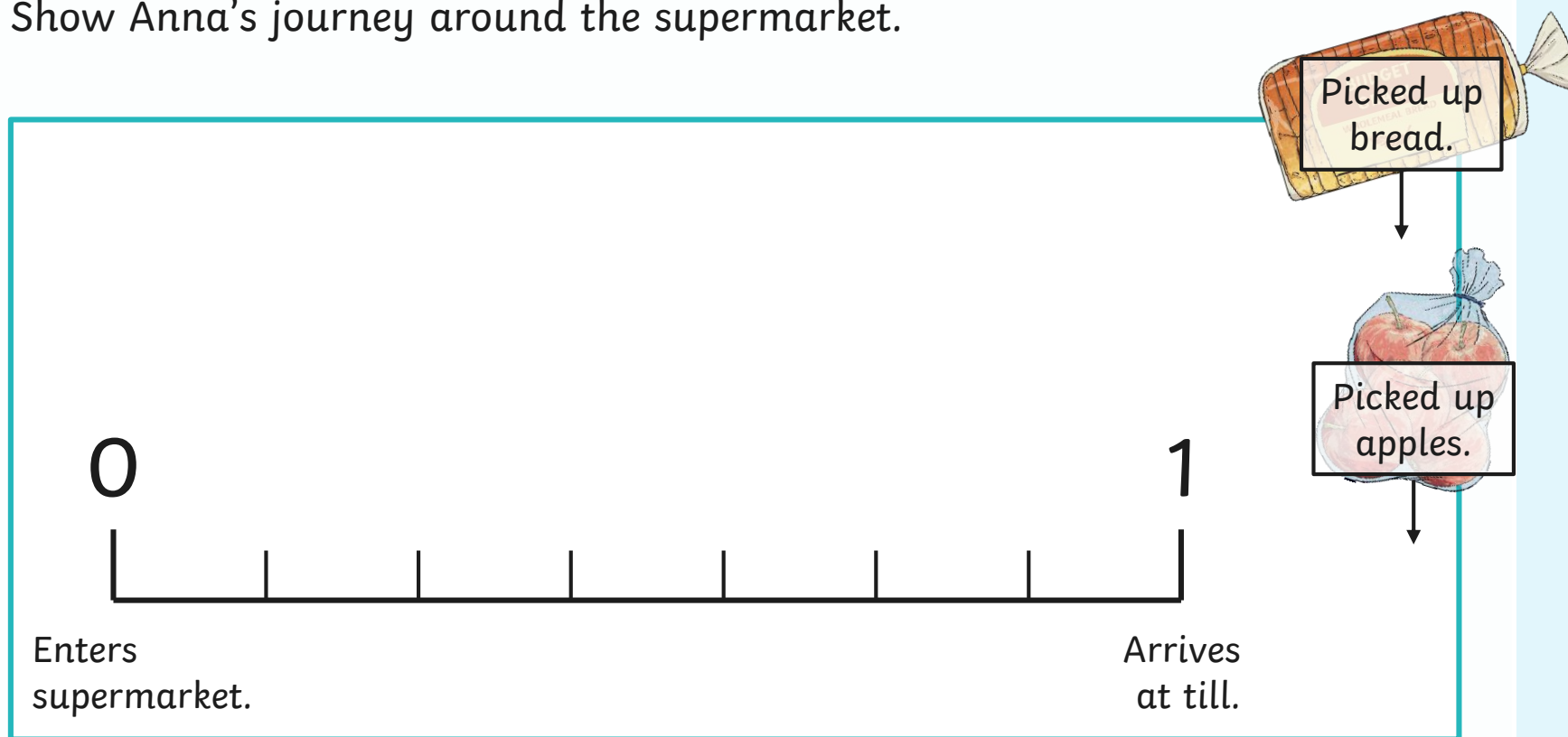


$$3\frac{3}{6}$$



Anna walked around the supermarket. She picked up some apples $\frac{1}{7}$ of the way to the till. Then, she picked up some bread $\frac{5}{7}$ of the way to the till.

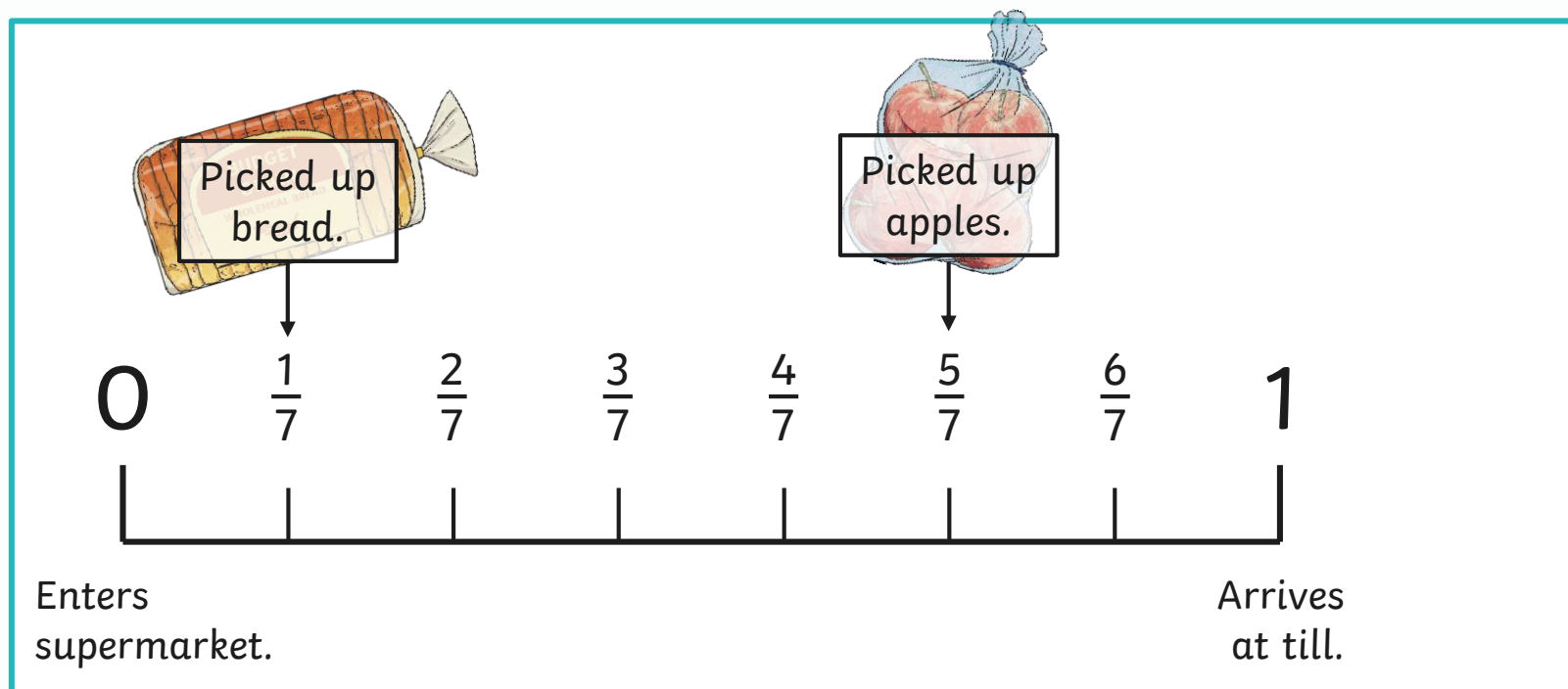
Show Anna's journey around the supermarket.

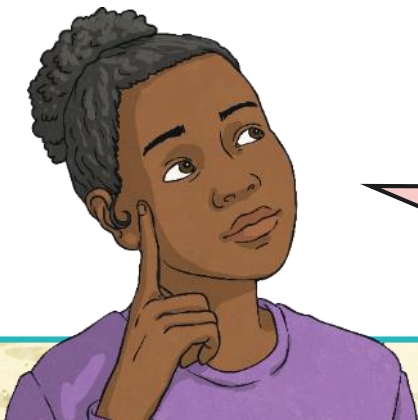
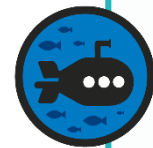




Anna walked around the supermarket. She picked up some apples $\frac{1}{7}$ of the way to the till. Then, she picked up some bread $\frac{5}{7}$ of the way to the till.

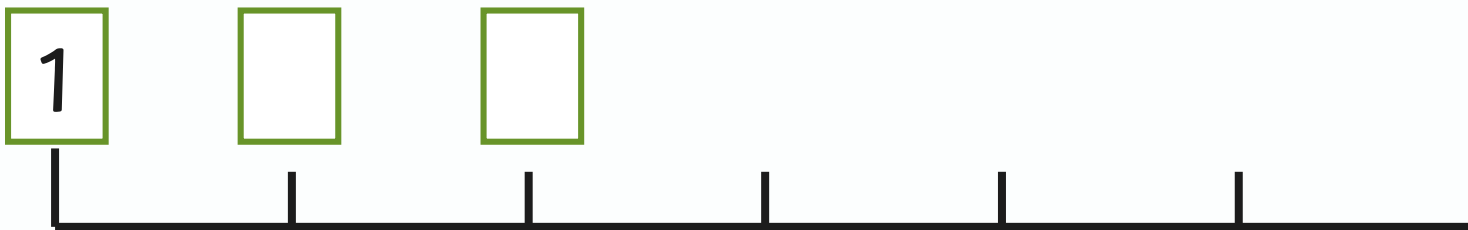
Show Anna's journey around the supermarket.





On my number line, I start at 1.
I move forwards 2 spaces,
backwards 1 space and forwards
5 more spaces.

What number do I land on?

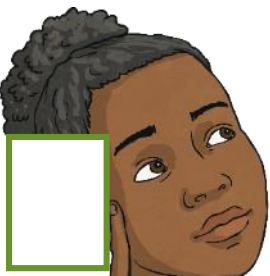


Fractions on a Number Line

Deeper

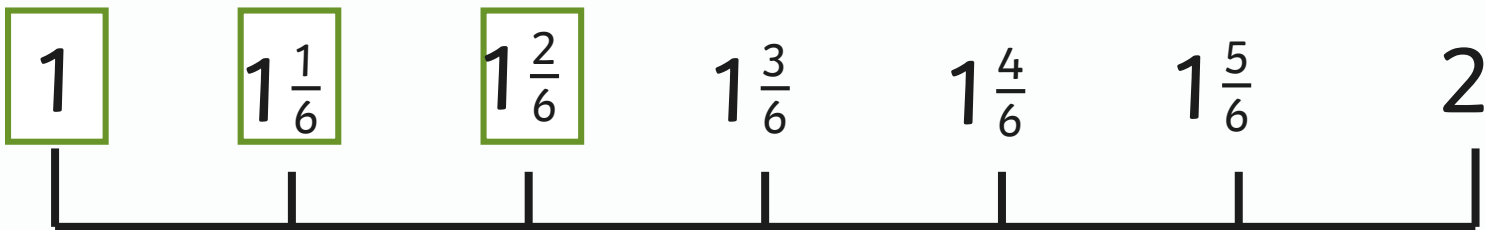


First label the number line



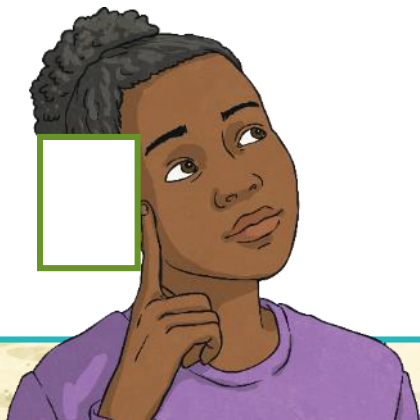
On my number line, I start at 1. I move forwards 2 spaces, backwards 1 space and forwards 5 more spaces.

What number do I land on?



Fractions on a Number Line

Deeper



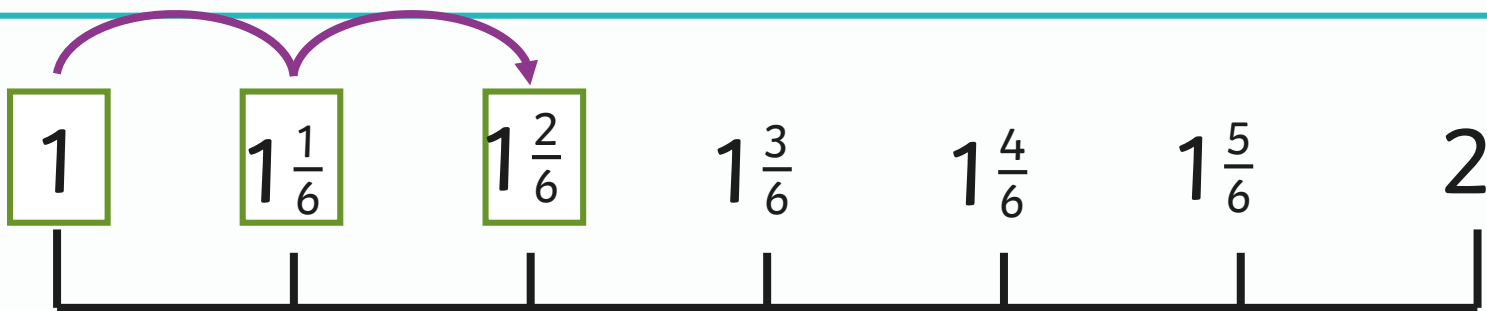
Now start the jumps.

1. Start at 1, jump 2 spaces forward.

I land on $1 \frac{2}{6}$.

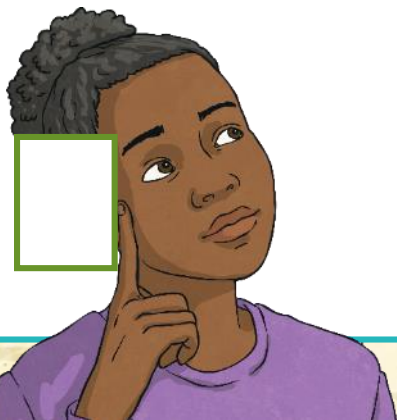
On my number line, I start at 1. I move forwards 2 spaces, backwards 1 space and forwards 5 more spaces.

What number do I land on?



Fractions on a Number Line

Deeper



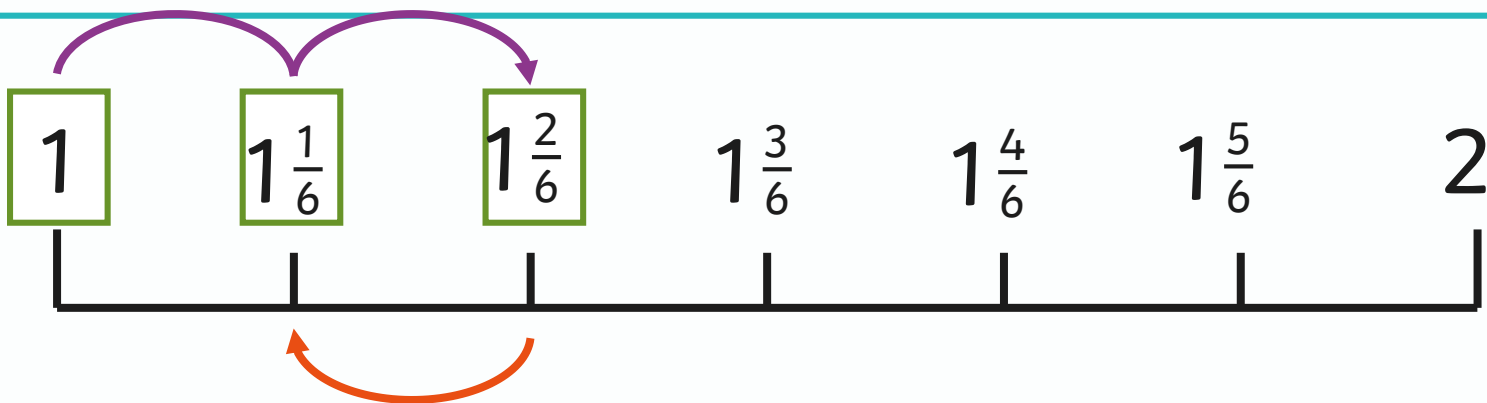
Continue the jumps.

Start at $1 \frac{2}{6}$ and jump backwards 1 space.

I land on $1 \frac{1}{6}$

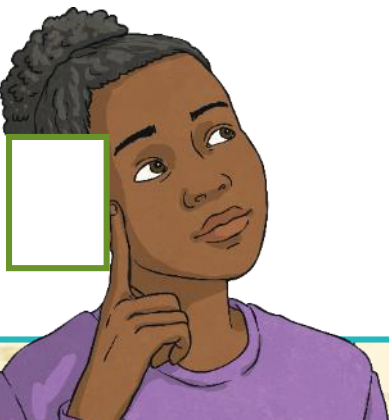
On my number line, I start at 1. I move forwards 2 spaces, backwards 1 space and forwards 5 more spaces.

What number do I land on?



Fractions on a Number Line

Deeper



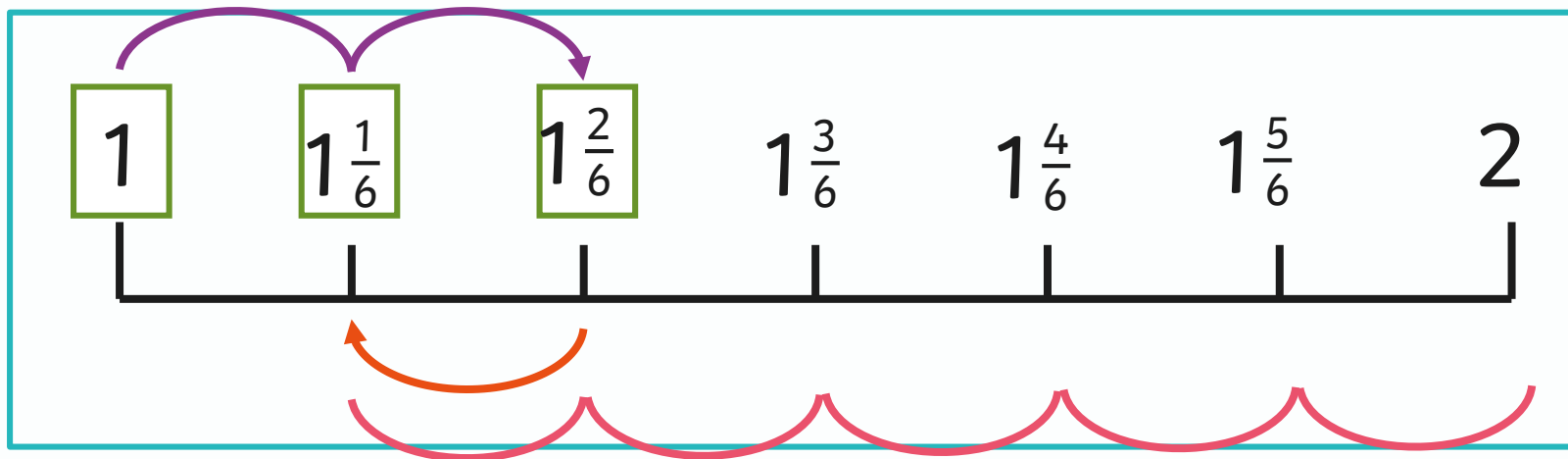
Continue the jumps.

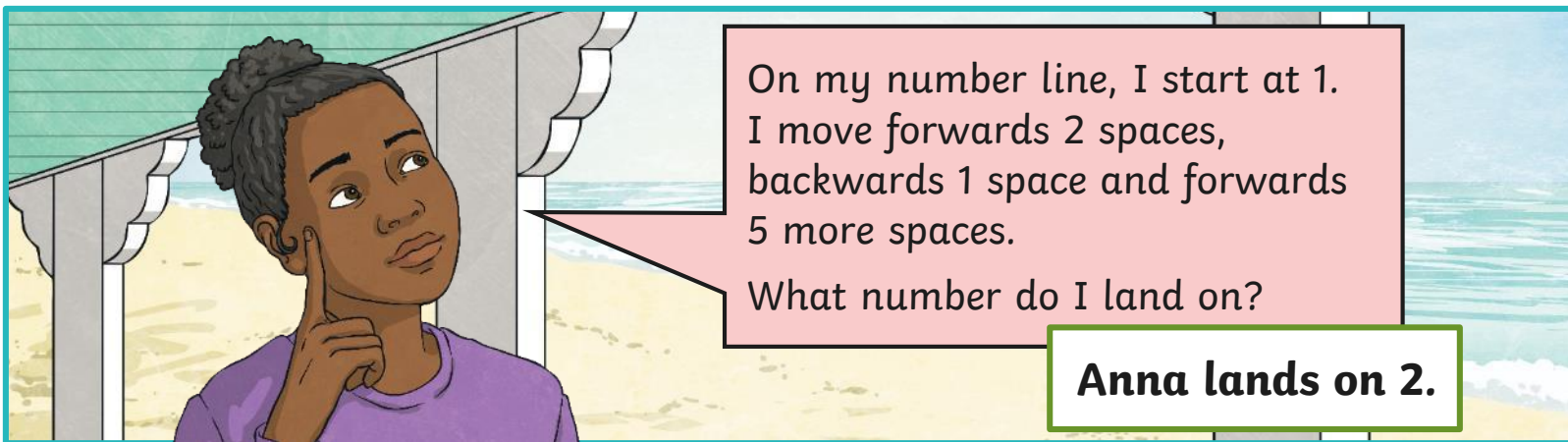
Start at $1\frac{1}{6}$. Jump forward 5 spaces.

I land on 2.

On my number line, I start at 1. I move forwards 2 spaces, backwards 1 space and forwards 5 more spaces.

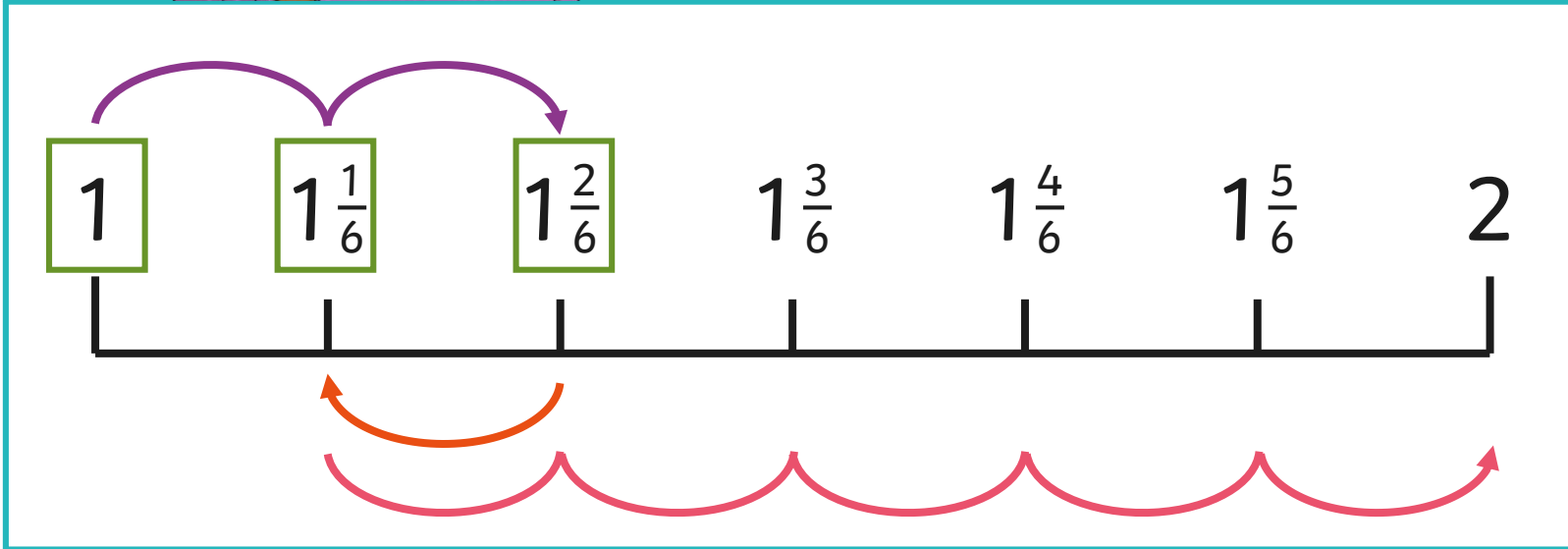
What number do I land on?

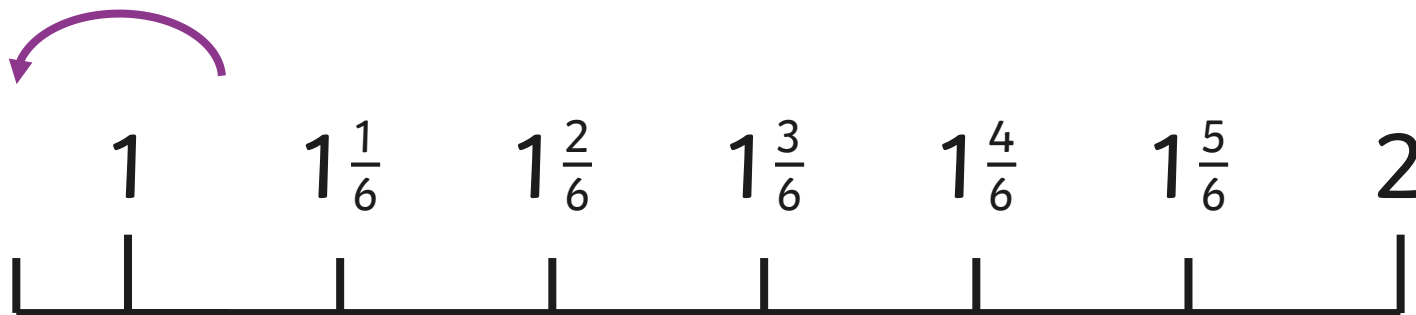
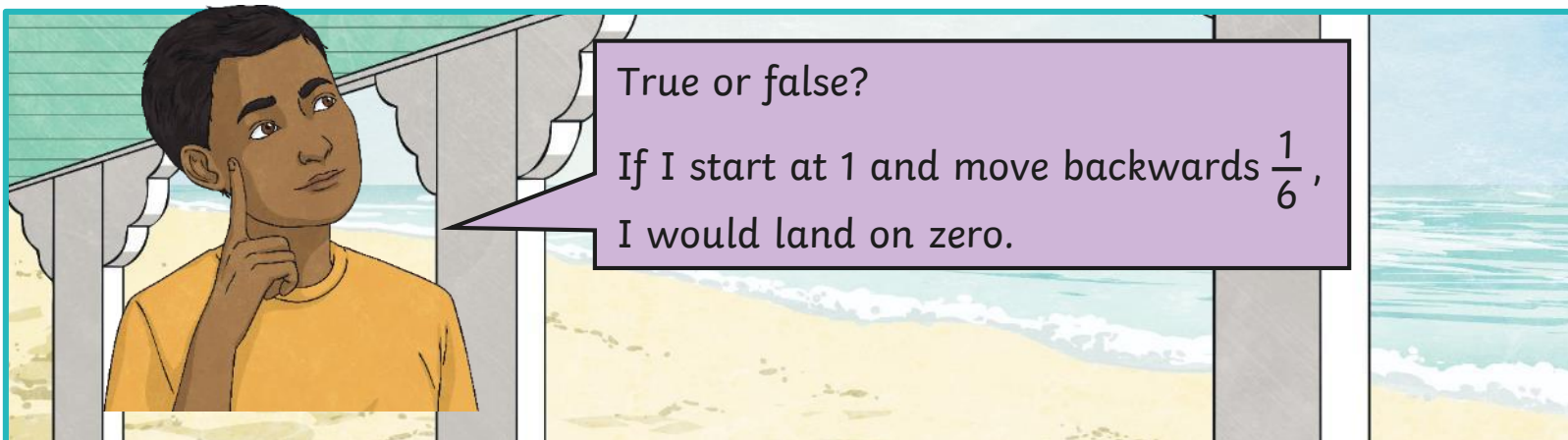
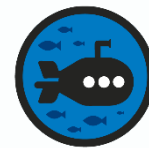


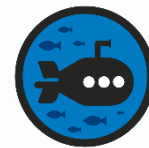


On my number line, I start at 1. I move forwards 2 spaces, backwards 1 space and forwards 5 more spaces. What number do I land on?

Anna lands on 2.

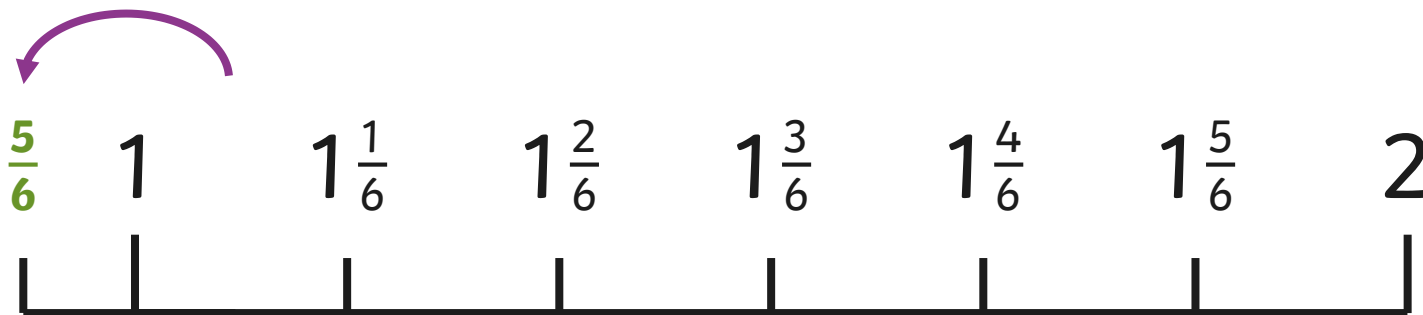






If I start at 1 and move backwards $\frac{1}{6}$,
I would land on zero.

False. 1 represents $\frac{6}{6}$. Moving backwards by $\frac{1}{6}$ will put you onto $\frac{5}{6}$.





Some shapes have been removed from a number line.



I am 4 away from triangle.



I am at the half way point.



I am between two shapes.

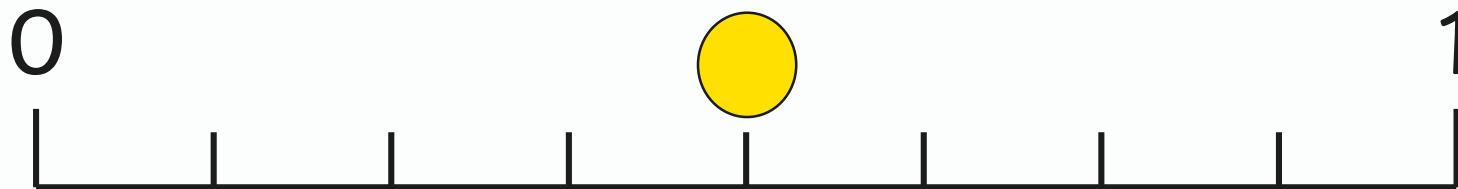


I am two away from 1.

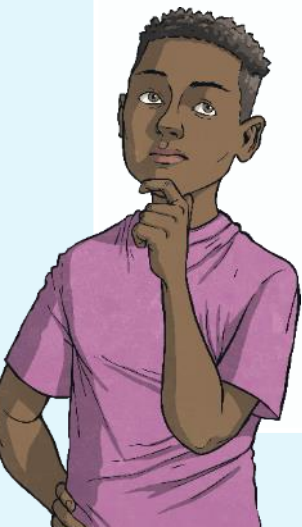




Some shapes have been removed from a number line.

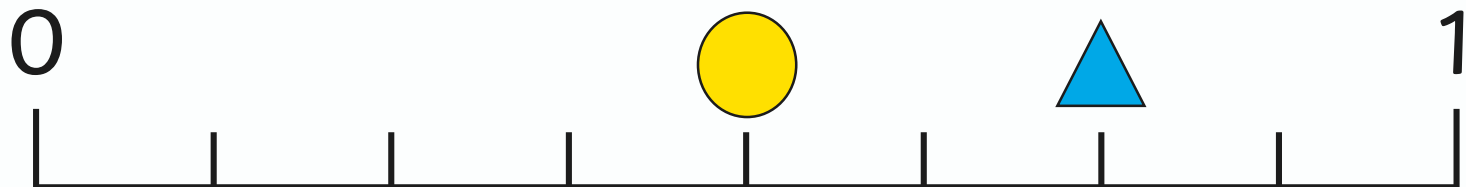


I am at the half way point.





Some shapes have been removed from a number line.



I am at the half way point.

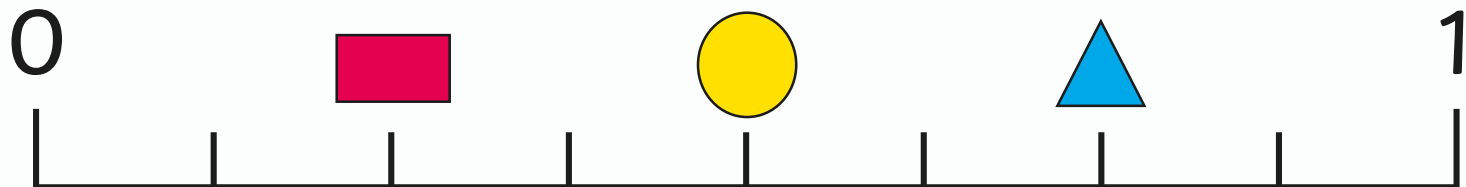


I am two away from 1.





Some shapes have been removed from a number line.



I am 4 away from triangle.



I am at the half way point.

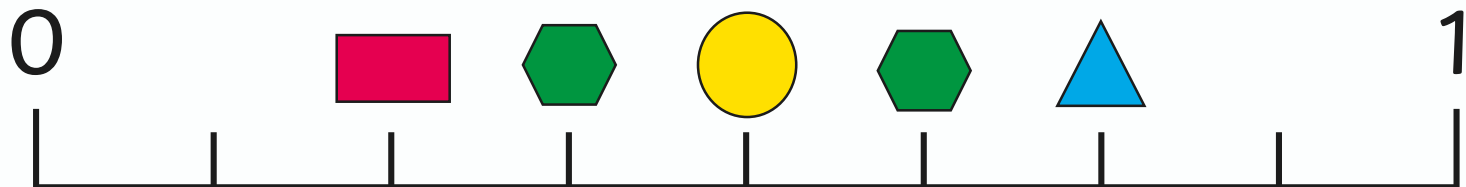


I am two away from 1.





Some shapes have been removed from a number line.



I am 4 away from triangle.



I am at the half way point.



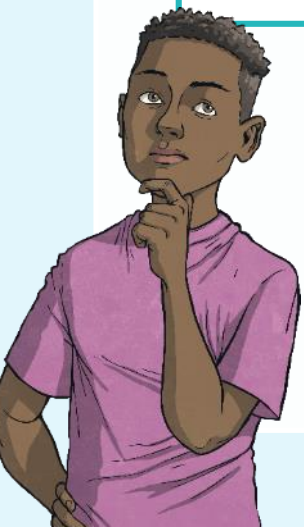
I am between two shapes.



I am two away from 1.

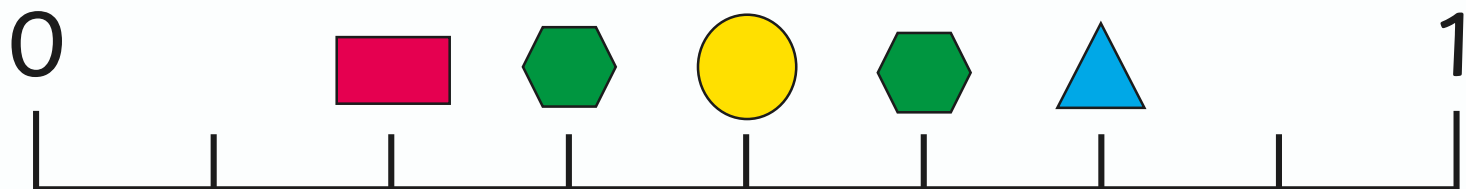


You have 2 options.





What fraction is represented by each shape?



I am 4 away from triangle.



I am at the half way point.



I am between two shapes.



I am two away from 1.



You have 2 options.

